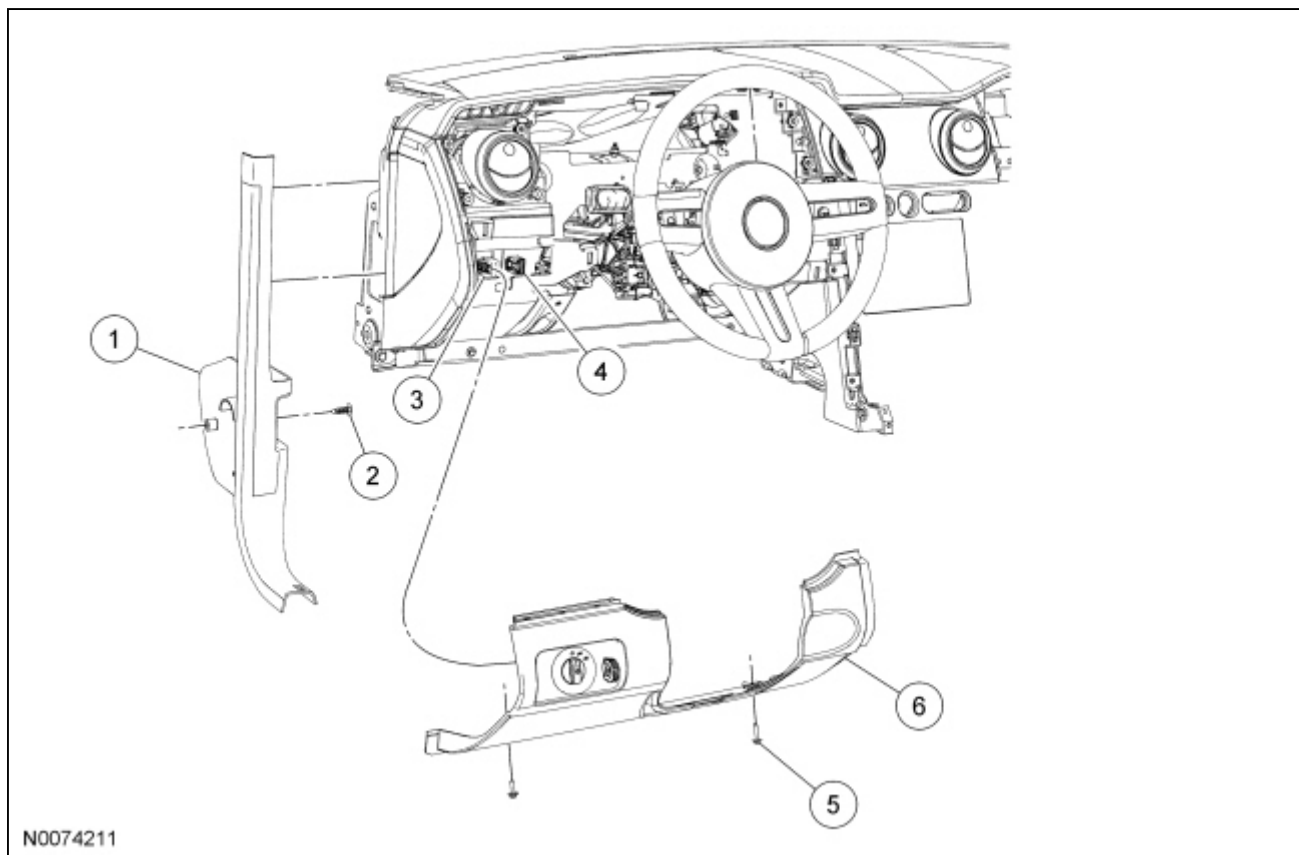
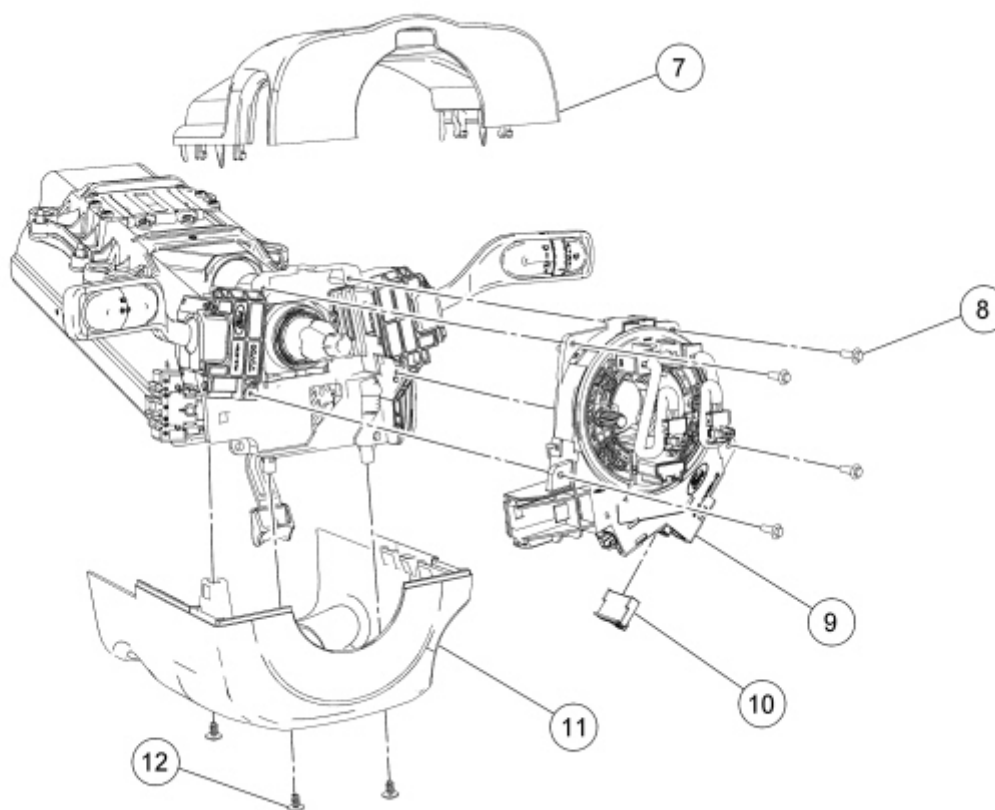


Clockspring



Item	Part Number	Description
1	A30A64	LH A-pillar lower trim panel
2	W505156	LH A-pillar lower trim panel screw
3	—	Headlamp switch electrical connector (part of 14401)
4	—	Courtesy lamp switch electrical connector (part of 14401)
5	W505156	Steering column opening cover screw (2 required)
6	04459	Steering column opening cover



Item	Part Number	Description
7	3530	Upper steering column shroud
8	—	Clockspring screw (part of 14A644) (4 required)
9	14A644	Clockspring
10	—	Clockspring electrical connector (part of 14401)
11	3K512	Lower steering column shroud
12	W504041	Lower steering column shroud screw (3 required)

Removal

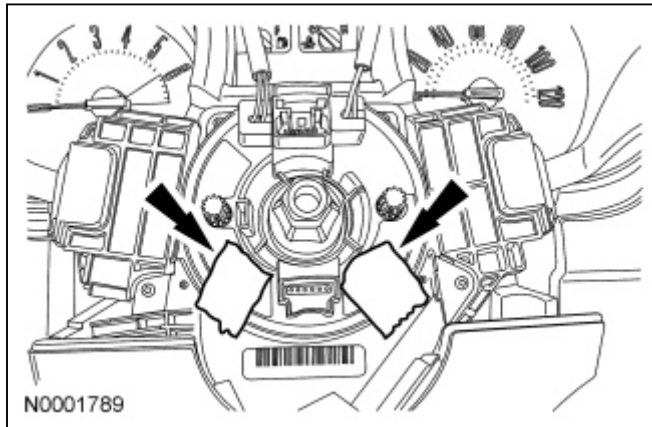
NOTE: The air bag warning indicator illuminates when the correct Restraints Control Module (RCM) fuse is removed and the ignition switch is ON.

NOTE: The Supplemental Restraint System (SRS) must be fully operational and free of faults before releasing the vehicle to the customer.

1. Depower the [SRS](#). For additional information, refer to [Supplemental Restraint System \(SRS\) Depowering and Repowering](#) in the General Procedures portion of this section.
2. Make sure the road wheels are in the straight-ahead position.
3. Tilt the steering wheel in the downward position and lock the tilt handle.
4. Remove the driver air bag module. For additional information, refer to [Driver Air Bag Module](#) in this section.
5. Remove the LH A-pillar lower trim panel.
6. Remove the 2 screws and the steering column opening cover.
 - Disconnect the headlamp and courtesy light switches electrical connectors.
7. Remove the 3 lower steering column shroud screws.

8. Remove the upper steering column shroud.
9. Remove the lower steering column shroud.
10. Remove the steering wheel. For additional information, refer to [Section 211-04](#).
11. **NOTE:** If the clockspring is to be reinstalled, do not allow the clockspring to turn from its removal position.

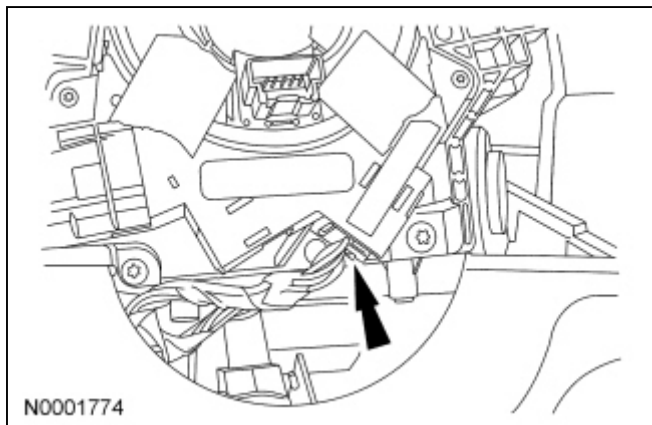
If reusing the clockspring, tape the clockspring center rotor to the outer housing to keep it from rotating.



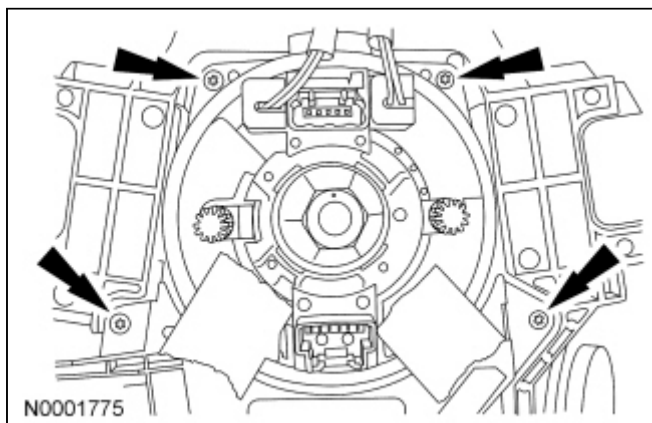
12. **NOTE:** The tilt steering column mechanism is spring loaded, carefully release the tilt handle while repositioning.

Carefully position the steering column up and leave the tilt handle in the unlocked position.

13. Disconnect the clockspring electrical connector.




14. Remove the 4 screws and clockspring.



Installation

Vehicles needing clockspring recentering

1.  **WARNING:** If the clockspring is not correctly centralized, it may fail prematurely. If in doubt, repeat the centralizing procedure. Failure to follow these instructions may increase the risk of serious personal injury or death in a crash.

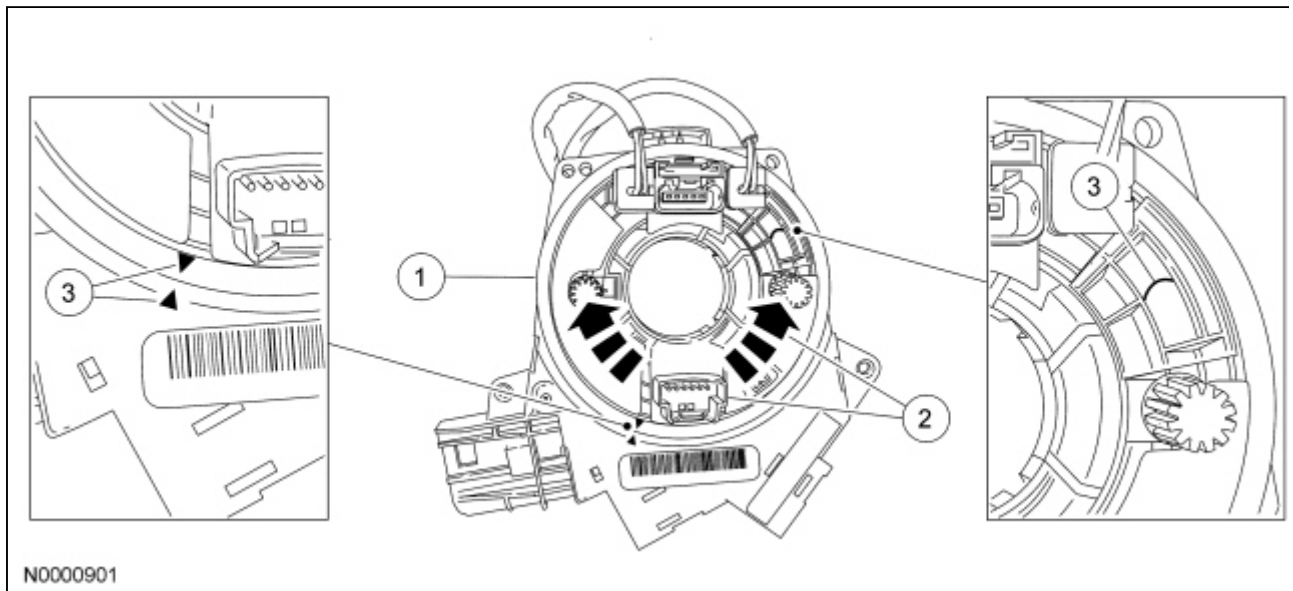
NOTICE: Make sure the road wheels are in the straight-ahead position. Failure to follow this instruction may damage the clockspring.

If the vehicle's clockspring has rotated out of center, follow these steps to center the clockspring.

1. Hold the clockspring outer housing stationary.
2. **NOTICE:** Overturning will destroy the clockspring. The internal ribbon wire acts as the stop and can be broken from its internal connection.

While turning the rotor counterclockwise, carefully feel for the ribbon wire to run out of length and for a slight resistance. Stop turning at this point.

3. Turn the clockspring clockwise (approximately 3 turns) until the ribbon wire shows anywhere across the window (window will be near the 2 o'clock position) and the arrow on the rotor lines up with the arrow on the bottom left of the housing. Clockspring is now centered.
 - Do not allow the rotor to turn from this position.



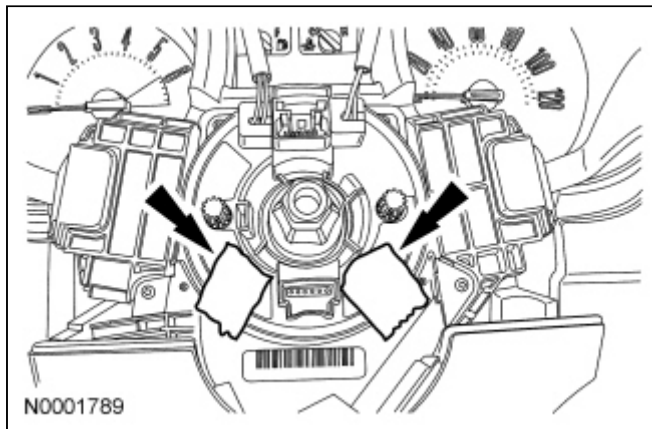
All vehicles

2. Install the clockspring and 4 screws.
3. Connect the clockspring electrical connector.
4. Position the lower steering column shroud upward.
5. Carefully position the steering column down and place the tilt handle in the locked position.
6. Install the upper steering column shroud.
7. Install the 3 lower steering column shroud screws.
8. Connect the headlamp and courtesy light switches electrical connectors and install the steering column opening cover and 2 screws.
9. Install the LH A-pillar lower trim panel.

Vehicle repairs reusing the same clockspring

10. **NOTE:** When the tape is removed, do not allow the clockspring to turn.

Remove the tape applied during clockspring removal.



Vehicles installing a new clockspring

11. **NOTICE:** Do not rotate the new clockspring between removing the sealing key and installing the steering wheel. If the vehicle is left unattended by the technician between removing the sealing key and installing the steering wheel, carry out the centralizing procedure. Failure to follow this instruction may result in component damage and/or system failure.

Remove the sealing key.

12. **NOTICE:** If the vehicle is left unattended by the technician between centralizing the clockspring and installing the steering wheel, to prevent damage to the clockspring, the centralizing procedure must be repeated.

Install the steering wheel. For additional information, refer to [Section 211-00](#).

13. Install the driver air bag module. For additional information, refer to [Driver Air Bag Module](#) in this section.
 14. Repower the [SRS](#). For additional information, refer to [Supplemental Restraint System \(SRS\) Depowering and Repowering](#) in the General Procedures portion of this section.
-

